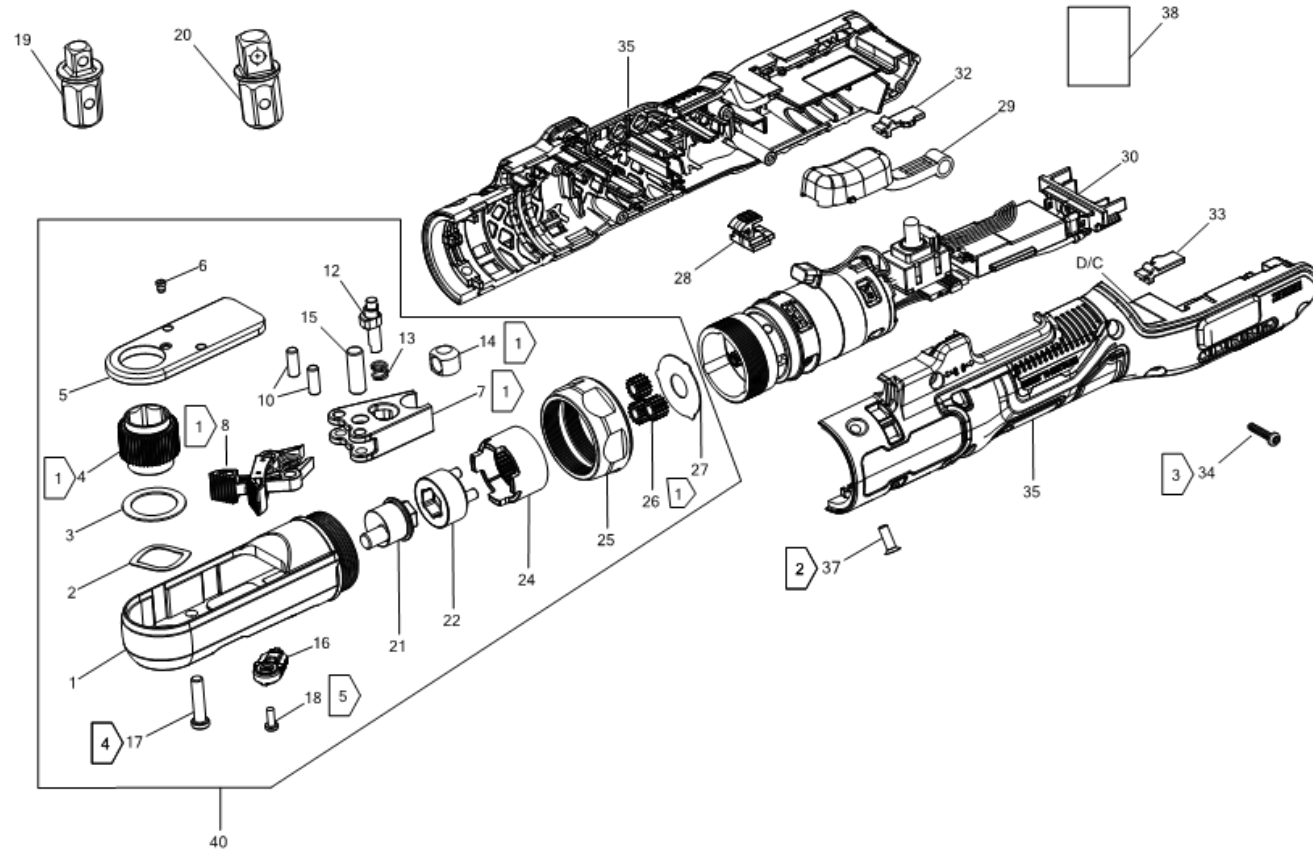
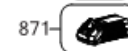
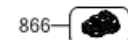
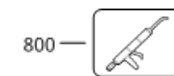


# DCF510E2G RATCHET 1



## NOTES:

- 1) ADD GREASE 34138513-00
- 2) TORQUE TO  $1.0 \pm 0.1$  Nm
- 3) TORQUE TO  $0.7 \pm 0.1$  Nm
- 4) TORQUE TO  $3.1 \pm 0.2$  Nm
- 5) TORQUE TO  $1.8 \pm 0.1$  Nm



## Parts List DCF510E2G RATCHET 1

Item	Part Number	Qty	Part Description	General Description	Other Info	Repair Inst	Markets
1	N904941	1	HEAD			No	QW
1	NA552026	1	HEAD SA			No	QW
2	NA129425	1	WASHER			No	QW
3	NA129422	1	WASHER			No	QW
4	NA034924	1	SPINDLE			No	QW
5	NA095416	1	PLATE			No	QW
6	NA121531	1	HEAD			No	QW
7	NA156319	1	LINK			No	QW
8	NA533995	1	PAWL			No	QW
10	NA025818	2	PIN			No	QW
12	NA129416	1	CAM			No	QW
13	NA129426	1	SPRING			No	QW
14	NA025820	1	BUSHING			No	QW
15	NA095419	1	PIN			No	QW
16	NA114401	1	BUTTON			No	QW
17	NA129420	2	SCREW			No	QW
18	NA129421	1	SCREW			No	QW
19	N926332	1	DRIVER	3/8"	3/8"	No	QW
20	N927256	1	DRIVER	1/2"	1/2"	No	QW
21	NA210202	1	CRANKSHAFT			No	QW
22	NA328719	1	CARRIER SA			No	QW
23	NA382893	2	BEARING BALL			No	QW
24	N769502	1	INTERGEAR			No	QW
25	N767501	1	NUT			No	QW
26	NA153966	3	RATCHET			No	QW
27	N820701	1	PLATE			No	QW
28	N878614	1	LOCK			No	QW
29	N720556	1	TRIGGER			No	QW
30	NA531942	1	MOTOR & SWITCH SA			No	QW
30	NA328703	1	MOTOR SA			No	QW
31	NA328704	1	CONTROL MODULE SA			No	QW
32	N728006	1	BUMPER			No	QW

## Parts List DCF510E2G RATCHET 1

Item	Part Number	Qty	Part Description	General Description	Other Info	Repair Inst	Markets
33	N728008	1	BUMPER			No	QW
34	N463678	5	SCREW			No	QW
35	NA120320	1	HOUSING SA			No	QW
37	N891761	4	SCREW			No	QW
38	NA093940	1	LABEL			No	QW
40	NA533996	1	HEAD SA			No	QW
821	NA093939	1	RATING LABEL			No	QW
866	NA319168	2	BATTERY 18V – 1.6AH – 28.8WH	DCBP034G		No	QW
871	NA132878	1	CHARGER	DCB1104-QW		No	QW